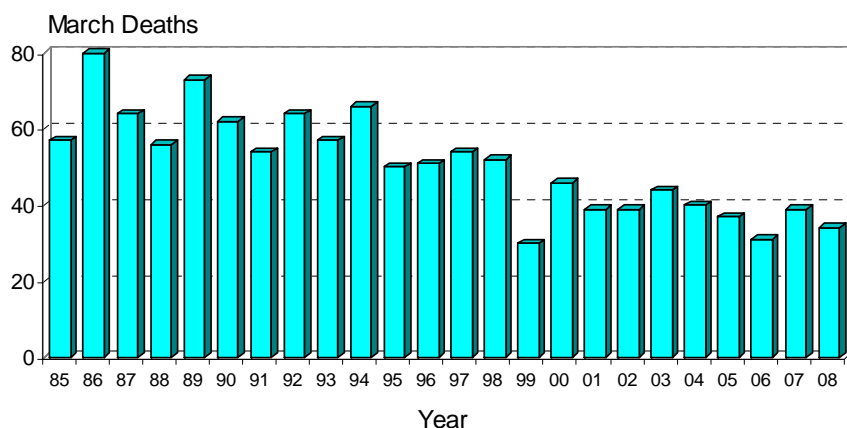


Monthly Road Crash Stats Update

March Road Deaths (2008)

The data presented here are provisional. Crash data as at - 7th April 2008.

- Thirty-four people died on New Zealand roads in March. This is five fewer than the number of deaths for March 2007 and is four fewer than the average March toll for the last five years.



- To the end of March this year 110 people have died on New Zealand roads. This is 13 more than at the same time last year.
- In the 12 months to the end of March 2008, 436 people were killed on our roads. This is 44 more than the 12 month toll at the end of March 2007.
- During March, 16 of the deaths were car or van drivers, 13 were car or van passengers, three were motorcyclists and two were truck drivers.
- Twenty-eight of the 34 killed were in open road crashes. Sixteen were in single vehicle crashes in which a driver lost control of the vehicle or ran off the road and 12 were in head on crashes.
- Of the 31 vehicle occupants killed, at least 10 were not restrained at the time of the crash.

Deaths and Police reported injuries by age, sex and type of road user

Deaths are for the 12 months to the end of March 2008. Reported injuries are for the 12 months to the end of September 2007.

Note: Preliminary fatal crash reports are submitted within 24 hours of a crash related death. Full injury crash reports are submitted only after the crash investigation is completed, so there is a lag in the reporting of injury crashes.

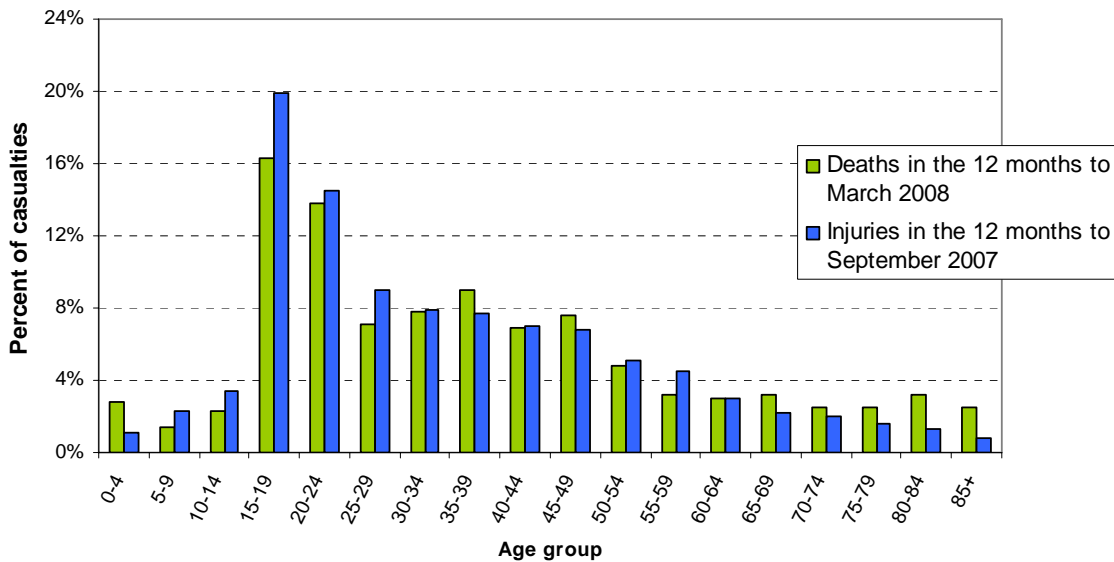
Road user type by sex

Sex	Drivers		Passengers		Motorcyclists		Pedestrians		Cyclists		Other		Total	
	Killed	Injured	Killed	Injured	Killed	Injured	Killed	Injured	Killed	Injured	Killed	Injured	Killed	Injured
Male	141	5121	65	1743	38	1020	32	478	8	625	6	26	290	9013
Female	56	3871	67	2062	6	222	15	424	1	216	1	8	146	6803
Total	197	8992	132	3805	44	1242	47	902	9	841	7	34	436	15816
%male	72%	57%	49%	46%	86%	82%	68%	53%	89%	74%	86%	76%	67%	57%

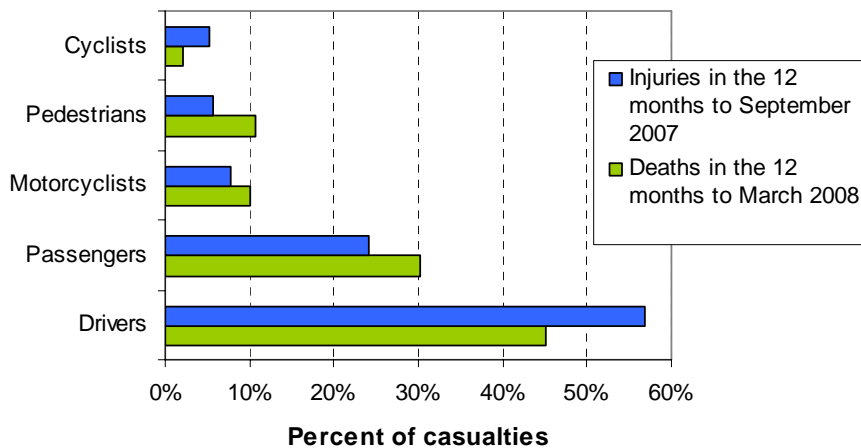
Road user type by age group

Age group	Drivers		Passengers		Motorcyclists		Pedestrians		Cyclists		Other		Total	
	Killed	Injured	Killed	Injured	Killed	Injured	Killed	Injured	Killed	Injured	Killed	Injured	Killed	Injured
Under-15	0	20	18	586	1	24	7	219	1	164	1	5	28	1018
15-24	53	2986	53	1487	8	404	13	192	2	147	2	4	131	5220
25-34	39	1709	16	392	8	220	1	94	1	138	0	1	65	2554
35-44	35	1469	12	300	17	237	5	75	0	146	0	3	69	2230
45-54	35	1168	9	231	6	224	3	53	1	123	0	2	54	1801
55-64	9	765	11	174	2	81	3	60	1	53	1	0	27	1133
65-74	9	404	5	146	2	26	6	49	3	18	0	2	25	645
75+	16	352	8	109	0	5	9	75	0	8	3	17	36	566
Unknown	1	119	0	380	0	21	0	85	0	44	0	0	1	649
Total	197	8992	132	3805	44	1242	47	902	9	841	7	34	436	15816

Deaths and reported injuries by age group

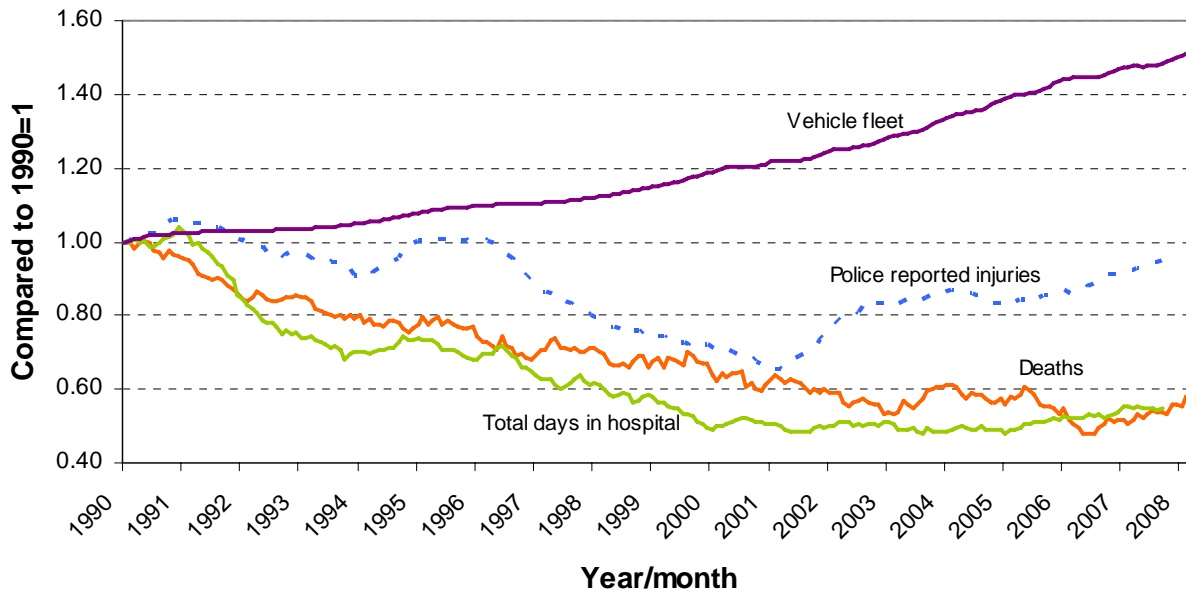


Types of road users killed and injured



Trends

Road crash casualties and vehicle fleet compared to 1990



Since 1990 the number of vehicles on the road has increased by 51% while Police reported injuries have dropped by 5%, road deaths have dropped by 42% and the number of days spent in hospital as a result of road crashes has dropped by 45%.

Crash outcomes and road user behaviour

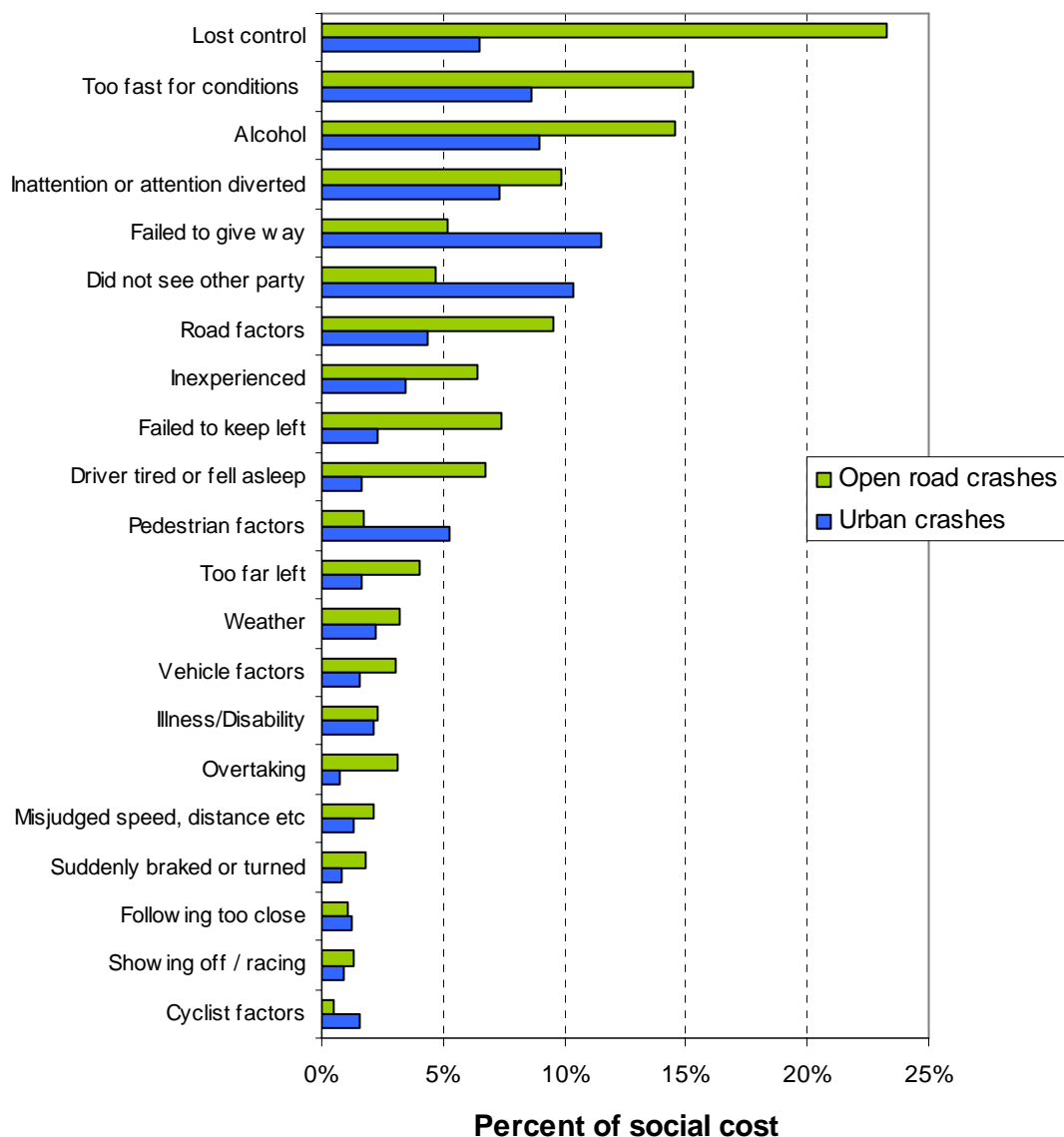
	1999	2000	2001	2002	2003	2004	2005	2006	2007	2008
Road Crash Data										
Deaths										
Number of road deaths	508	462	455	405	461	435	405	393	423	436
Deaths per 10,000 vehicles	2.0	1.8	1.7	1.5	1.6	1.5	1.3	1.3	1.3	1.4
Deaths per 100,000 people	13.3	12.1	11.8	10.3	11.5	10.7	9.9	9.5	10.0	10.3
Injuries										
Reported injuries	11999	10962	12368	13918	14372	13890	14456	15174	15816	
Number hospitalised (all discharges)	5955	5990	6700	6530	6540	6580	7210	7680	7627	
Number hospitalised for over 1 day [#]	3158	2846	2880	2750	2720	2710	2860	3020	3088	
Number hospitalised for over 3 days [#]	1966	1815	1794	1740	1700	1700	1840	1900	2020	
Behavioural Measures										
Speed										
Rural speed, % over 100 km/h	56%	52%	47%	43%	39%	39%	36%	32%	29%	
Rural speed, mean (km/h)	101.8	101.1	100.2	99.1	98	97.8	97.1	96.4	96.3	
Rural speed, 85th percentile (km/h)	112	111	109	107	105	105	104	103	103	
Alcohol										
Number of drivers killed with excess alcohol	61	58	55	60	70	69	58	54		
Percent of drivers killed with excess alcohol	21%	21%	21%	24%	27%	27%	25%	24%		
Occupant Restraints										
Seat belts worn by adults, front	89%	90%	92%	92%	92%	94%	95%	95%	95%	
Seat belts worn by adults, rear	67%	76%	70%	78%	81%	86%	86%	89%	87%	
Children restrained, 0-14 years	89%	87%	89%	94%	96%	97%	94%	96%	94%	
Child restraints used, 0-4 years	75%	79%	82%	86%	86%	87%	89%	91%	91%	
Cycle helmets										
Cycle helmets worn, weekday	95%	93%	94%	89%	89%	92%	91%	94%	92%	

[#] Includes only the first stay in hospital

Note: Road deaths for 2008 are for the 12 months to the end of March 2008. Reported injuries for 2007 are for the 12 months to the end of September 2007.

Factors contributing to crashes – ranked by social cost*

Factors contributing to crashes



Notes: Crash data for the 12 months to end of September 2007.

Since there can be several contributing factors for a single crash the figures represented in this graph add to more than 100%.

* Social cost calculations include loss of life or life quality, loss of output due to injuries, medical and rehabilitation costs, legal and court costs and property damage.